

REFRA-Seminar International

Refractory know-how for the optimization of firing processes



REFRA-Seminar International

Prospective agenda

Day of arrival

Local hotel

Bayrischer Hof
 Bahnhofstr. 14
 49324 Melle
 www.bayrischerhof-melle.de
 05422 94650

19:00 Dinner at
 Bayrischer Hof

Tag 1

8:30 Registration

9:00 Welcome

9:15 Introduction of the
 REFRA-Seminar,
**Introduction to the
 refractories world**

11:00 Coffee break

11:30 **Refractory materials**
 Use of fireproof
 materials depending on
 the manufacturing
 process, the type of
 furnace and the end
 products

12:30 Lunch

13:30 **Tunnel kiln wall**

- Current wall systems
- Aspects of design
- Wall damages
- Walls out of service

14:45 Coffee break

15:15 **Suspended ceilings**

- Current ceiling systems
- Aspects of design
- Ceiling damages
- Ceilings out of service

17:00 End of semincar - day 1

18:30 Dinner at the Italian
 restaurant La Grotta

The cheapest refractory
 materials can prove to be
 the most expensive in the
 end!



Wall system



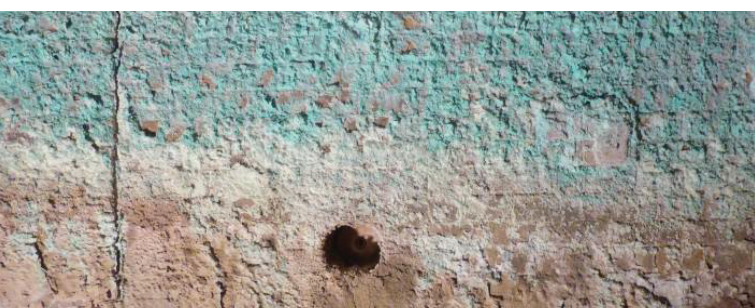
Suspended ceiling system



Corroded wall with step cracks



Section of suspended ceiling system dropped due to constraints



Corroded wall due to alkali attacks



Corroded suspended ceiling due to alkali attacks

REFRA-Seminar International Prospective agenda

Tag 2

- 9:00 **Tunnel kiln car systems**
- Current kiln car systems
 - Aspects of design
 - Maintenance measures
 - Basic recommendations
 - Foundations and track systems (rails)
 - Wheels and steel frames
 - Material and design of the refractory structure
 - Kiln car transport
 - Kiln car cleaning
 - Heat transmission and undercar temperature
 - Factory shutdown due to tunnel kiln car damage
 - Support and Supervision by Refratechnik

10:30 Coffee break

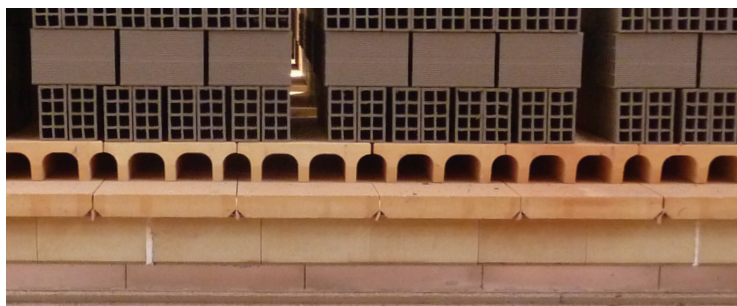
- 11:00 **Kiln furniture**
- Current kiln furniture systems
 - Which material for which area?
 - Design of H-cassettes
 - Design of base frames
 - Innovative kiln car system with base frame and H-cassettes
 - Reduction of maintenance costs due to trouble-free operation

12:30 Lunch

- 13:30 **Energy savings**
- Influence on energy consumption in the wrefractory area.
- Influencing factor material
 - Influencing factor construction
 - Heat transfer calculation
 - Conclusion

14:15 End of Seminar

14:30 Snack before departure



Tunnel kiln car system



H-cassette system with base frame



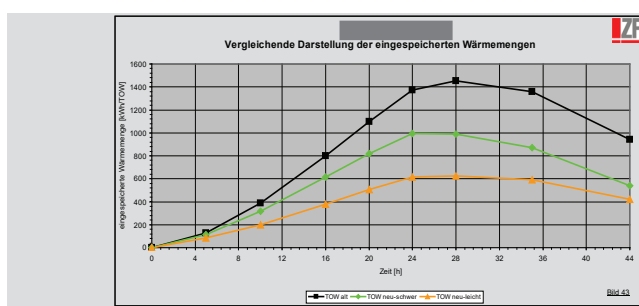
Risse durch Ansammlung von Elementen in den Fugen



Spalling at H-cassettes



Incorrect movement of tunnel kiln cars



Energy calculation

Information for participants

Participation is limited to 10 persons (min. 5 persons)

Registration:

Please contact our sales representative

Deadline for registration:

8 weeks before the start of the training.

Hotel:

Rooms will be reserved by Refratechnik Ceramics GmbH.

Benefits:

Complete documentation, (lunch, dinner and beverages during breaks)

Language:

The REFRA-Seminar International is held in English language. Participants should therefore have at least a basic knowledge of the English language.

Fees:

This 2-day REFRA-Seminar International costs Euro 850,00 (Standard price. Travelling expenses and accomodation excluded).

Cancellation fee:

- Up to 61 days before start of the course: no cancellation fee.
- Up to 60 days before start of the course: 33% of the total price will be charged (taxes and duties excluded).
- Up to 30 days before start of the course: The full price will be charged (taxes and duties excluded).

Venue of REFRA Seminar International

A meeting room at your location or a conference room in a local hotel.

Equipment: Conference technology such as screen/beamer or TV with HDMI/USB access